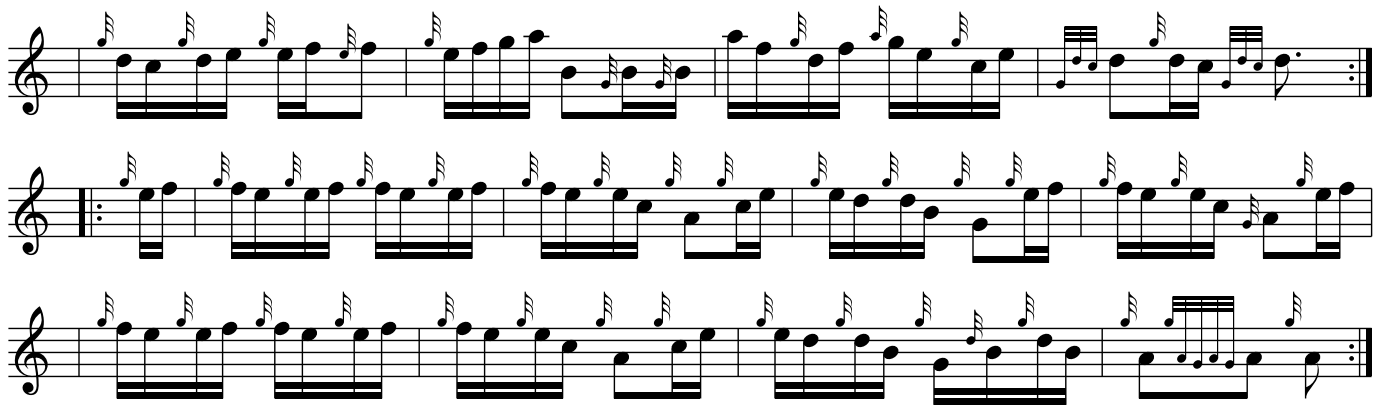


# European

*arr. Patrick McLaurin*

The musical score for "European" is written in 2/4 time and consists of 12 staves of treble clef notation. The piece begins with a repeat sign and a first ending bracket. The melody is characterized by a mix of eighth and sixteenth notes, often beamed together. There are several repeat signs throughout the score, with first and second endings indicated by numbers 1 and 2. The final staff concludes with a double bar line and repeat dots.

A page of musical notation for guitar, consisting of 13 staves. The notation includes various rhythmic patterns, accidentals, and dynamic markings. The first staff begins with a treble clef and a key signature of one flat. The second staff has a repeat sign. The third staff has a repeat sign and a fermata. The fourth staff has a repeat sign. The fifth staff has a repeat sign. The sixth staff has a repeat sign. The seventh staff has a repeat sign. The eighth staff has a repeat sign and a fermata. The ninth staff has a repeat sign and a first ending bracket labeled '1'. The tenth staff has a repeat sign. The eleventh staff has a second ending bracket labeled '2'. The twelfth staff has a repeat sign. The thirteenth staff has a 2/4 time signature and a repeat sign.



Second ending is just harmony to first ending. I don't know which is the harmony and which is the tune.